

# Big Horn Schools Campus

Big Horn, Wyoming

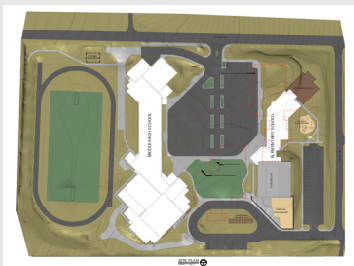
Client  
Sheridan County School District #1

Size  
17.3 Acres

Completion Date  
Summer 2010  
High School/Middle School

Fall 2012  
Elementary School

Architecture  
Malone Belton Abel



Beginning in 2008, Sheridan County School District #1 embarked on an ambitious program to reconstruct the entire K-12 campus located in Big Horn, Wyoming. To meet Wyoming School Facilities Commission requirements, the school had to be reconstructed on the existing site without any property acquisition. This posed extreme challenges in keeping all facilities accessible during the various phases of construction.

The community of Big Horn does not have a central sanitary sewer system, so wastewater treatment and disposal for the existing campus was through various septic tanks and leach fields. The initial phase of work involved construction of a new on-site wastewater treatment facility to allow taking the old system off line and clearing the area for new building construction. This initial phase also involved demolition of various old buildings and utility lines, constructing a replacement playground and temporary bus drop off area, and installing the backbone system for campus storm drainage and looped fire main.

The second phase of construction involved constructing a new 107,000 square foot High School/Middle School building with new football field and paved running track. The third phase involves demolition of the existing HS/MS building, followed by construction of a new 27,000 square foot Elementary School attached to an existing gymnasium and remodeled support areas for a combined total of 40,000 square feet. Also included in this phase will be all associated site grading, drainage and new staff parking.

The fourth and final phase of work will involve demolition of the existing Elementary School building, construction of a new main student parking lot and the final portion of the new bus drop-off area, sidewalks and the final open space/play area between the HS/MS and Elementary School buildings.

